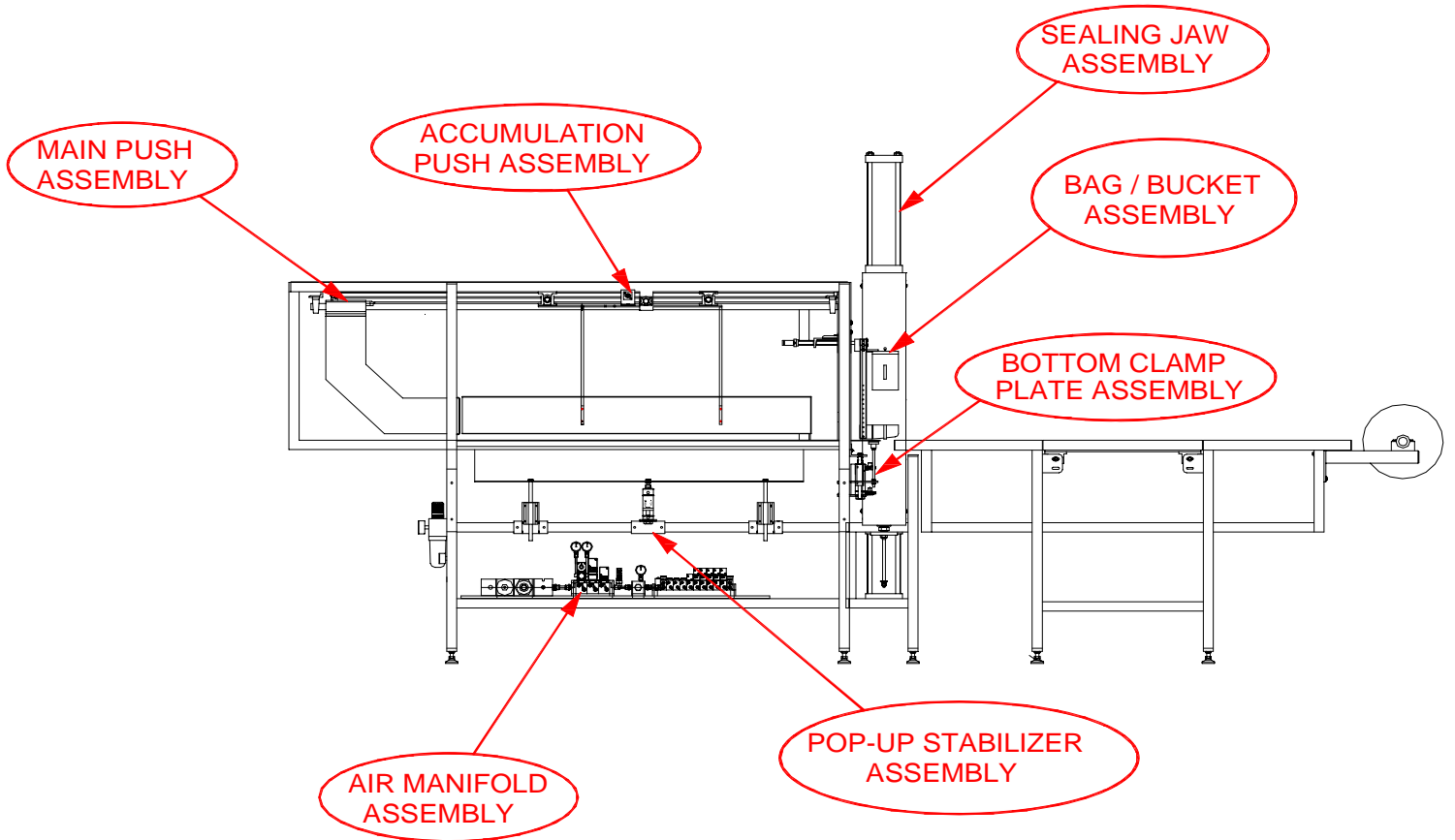




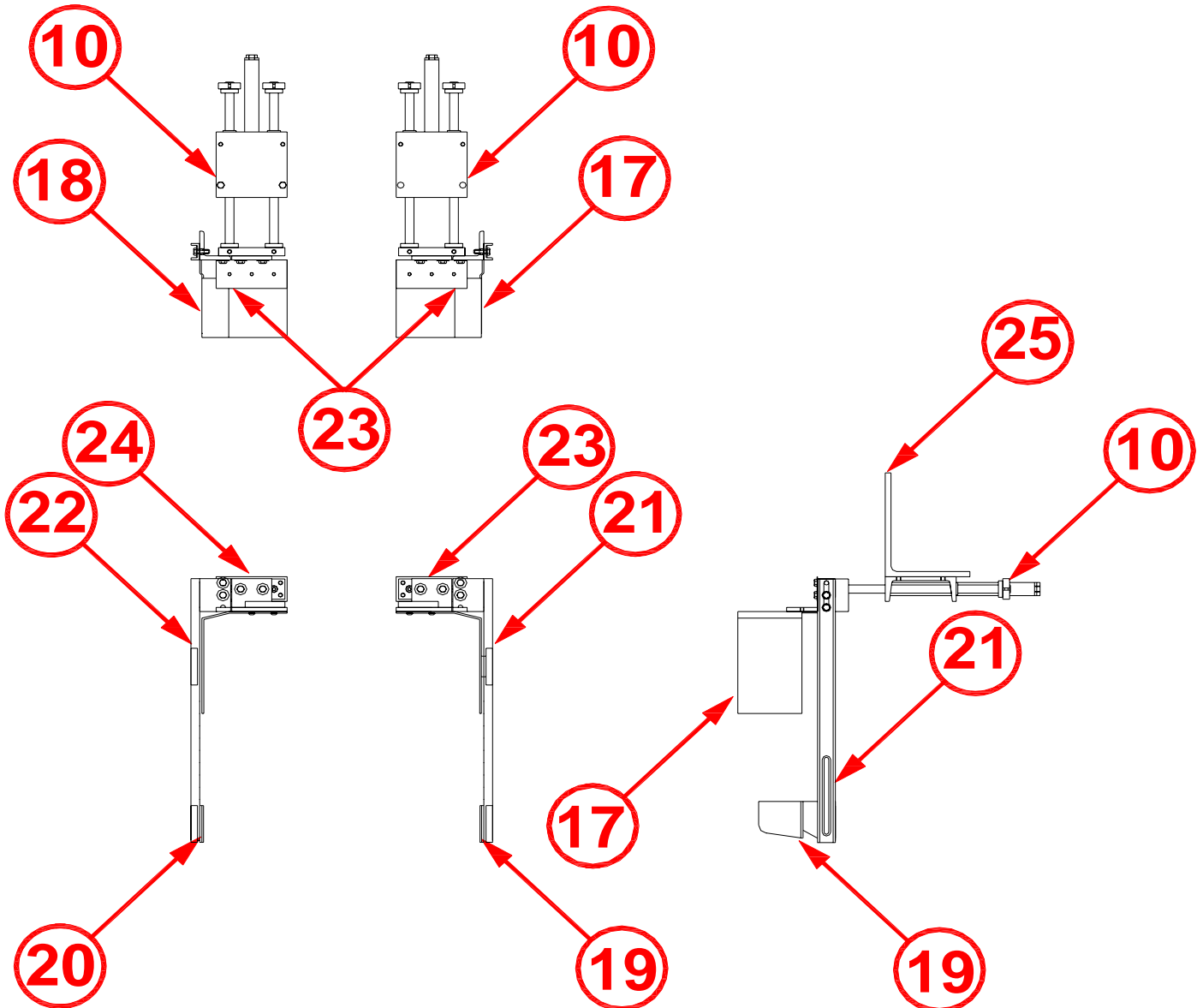
Northern Equipment & Conveyor Co.

SEMI AUTOMATIC BAGGER PARTS LIST



BAG BUCKET SLIDE ASSEMBLY PARTS LIST

PART #	DESCRIPTION	QTY	ITEM
M100-007	POWER SLIDE CYLINDER 8"	EA.	10
14519-02	BUCKET UPPER LEFT HAND	EA.	17
14519-01	BUCKET UPPER RIGHT HAND	EA.	18
14553-02	FINGER BAG HOLDING LEFT HAND	EA.	19
14553-01	FINGER BAG HOLDING RIGHT HAND	EA.	20
10145-02	BUCKET MOUNTING ANGLE LEFT HAND	EA.	21
10145-01	BUCKET MOUNTING ANGLE RIGHT HAND	EA.	22
10115-02	BRACKET - POWER SLIDE LEFT HAND	EA.	23
10115-01	BRACKET - POWER SLIDE RIGHT HAND	EA.	24
10115-1	BRACKET - CYLINDER MOUNT LH OR RH	EA.	25

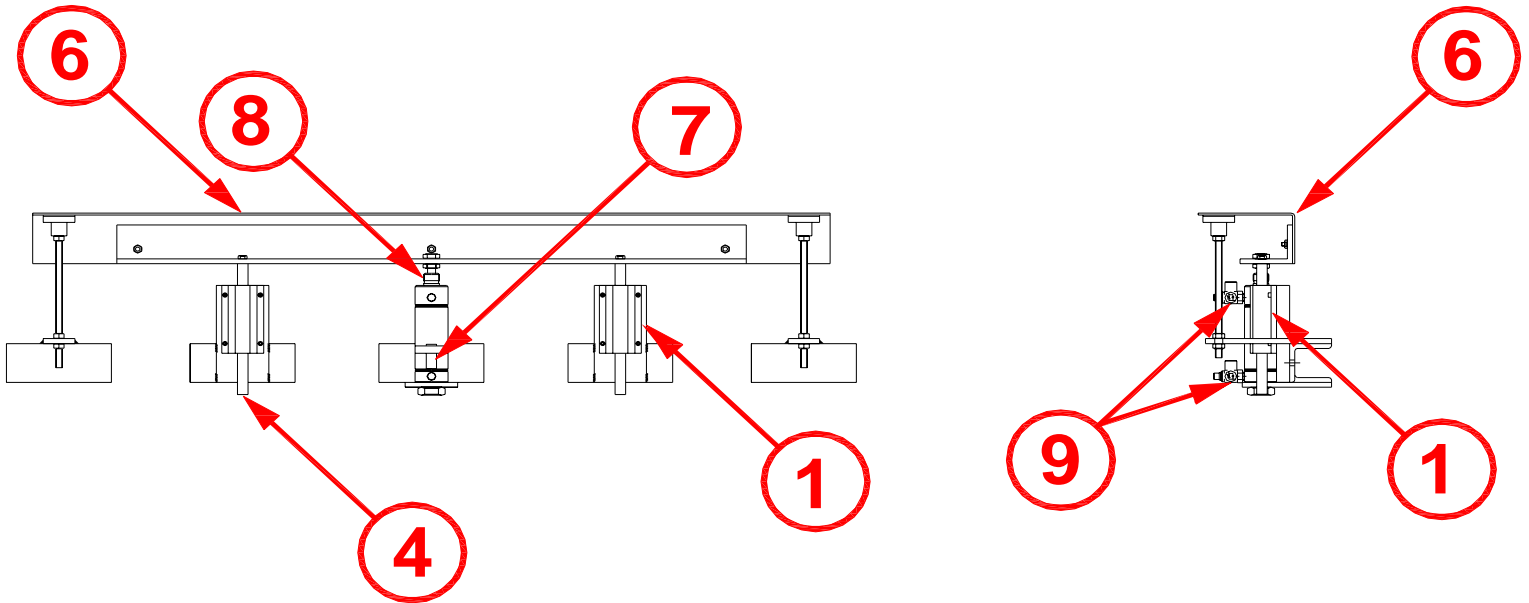




Northern Equipment & Conveyor Co.

CLAMP PLATE / POP UP STABILIZER PLATE ASSEMBLY PARTS LIST

<i>PART #</i>	<i>DESCRIPTION</i>	<i>QTY</i>	<i>ITEM</i>
M100-320	BEARING 1/2" TWN-8	EA.	1
F600-015	CLAMP PLATE GUIDE SHAFT	EA.	4
F600-017	CLAMP PLATE	EA.	6
F800-027	STABILIZER PLATE	EA.	6
E100-069	REED SWITCH CLAMP PLATE	EA.	7
M100-249	STABILIZER / POP UP CYLINDER	EA.	8
M100-041	FLOW CONTROL	EA.	9
M100-408	CLAMP PLATE CYLINDER	EA.	

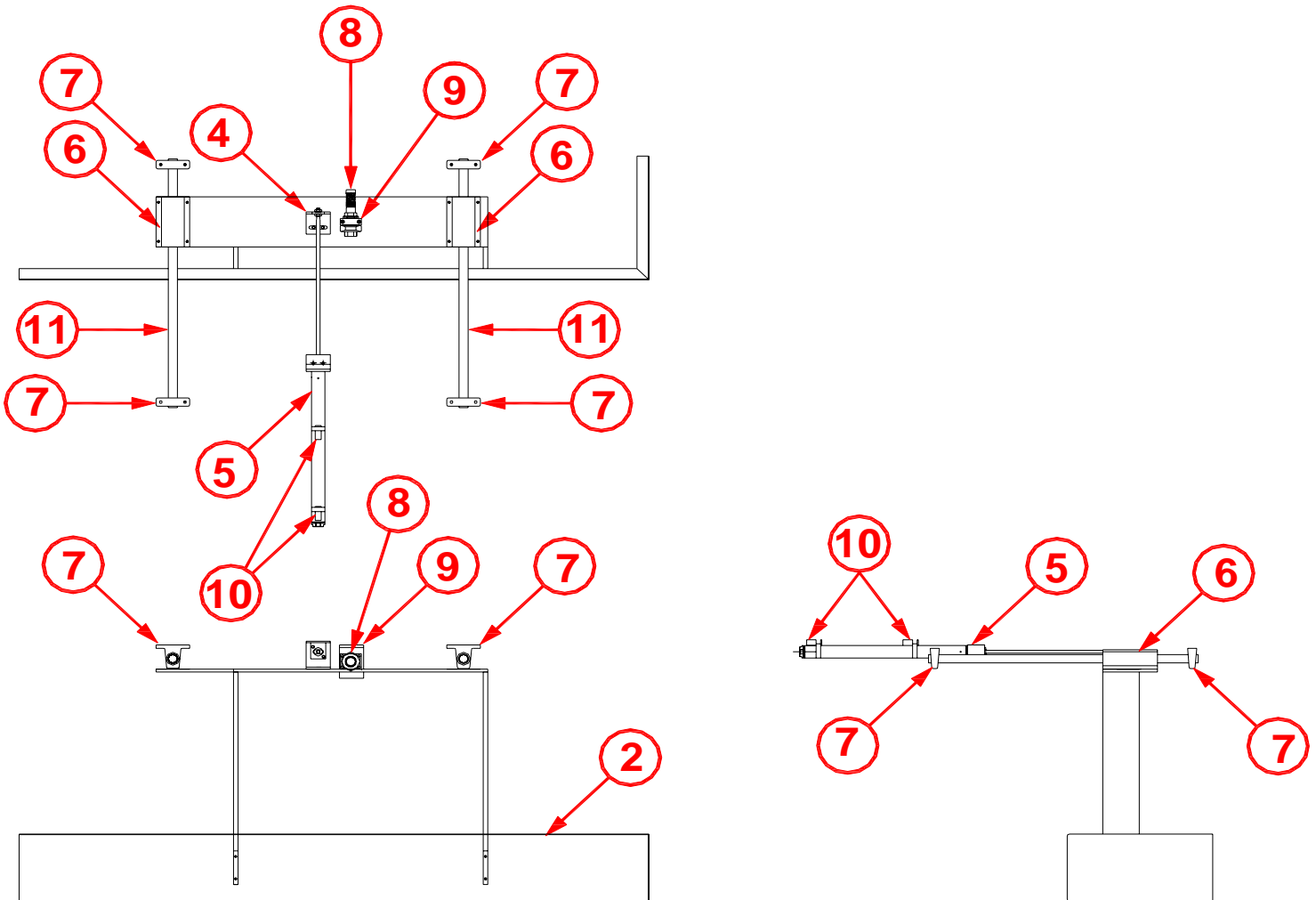




Northern Equipment & Conveyor Co.

ACCUMULATION PUSH ASSEMBLY PARTS LIST

<i>PART #</i>	<i>DESCRIPTION</i>	<i>QTY</i>	<i>ITEM</i>
F800-016	SIDE PUSH PADDLE	EA.	2
F800-017	MOUNTING BRACKET CYLINDER ROD	EA.	4
M100-031	SIDE PUSH CYLINDER TRUNION MOUNT	EA.	5
M100-383	TWN 12 BEARINGS 3/4" DIA.	EA.	6
M100-029	SHAFT SUPPORT	EA.	7
M100-033	SHOCK ABSORBER	EA.	8
M100-032	SHOCK ABSORBER MOUNTING BLOCK	EA.	9
E100-069	REED SWITCH	EA.	10

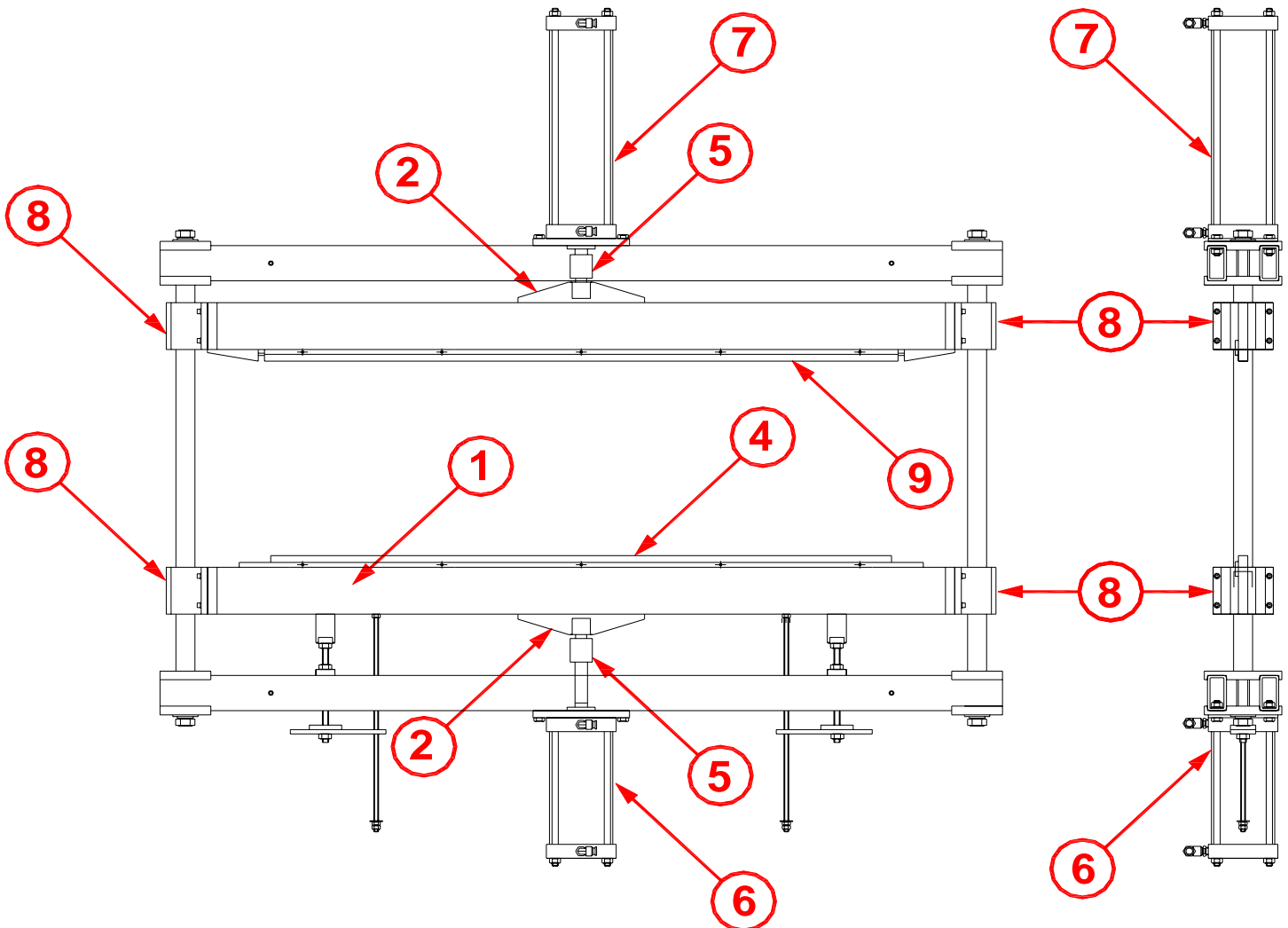




Northern Equipment & Conveyor Co.

SEALING JAW ASSEMBLY

PART #	DESCRIPTION	QTY	ITEM
A600-027	JAW CROSS MEMBER ASSEMBLY	EA.	1
A600-028	PRESSURE DISTRIBUTION PLATE ASSEMBLY	EA.	2
M100-015	PRESSURE BAR	EA.	4
E100-465	SILICON RUBBER STRIP (PRESSURE BAR)	EA.	4
M102-218	TEFLON TAPE 3/4" X 60" ADHESIVE BACKED	EA.	4
M100-013	ALIGNMENT COUPLING	EA.	5
M101-871	JAW CYLINDER (BOTTOM) 5" BORE 7 1/2" STROKE	EA.	6
M101-871A	JAW CYLINDER (BOTTOM) 4" BORE 7 1/2" BORE	EA.	6
M101-872	JAW CYLINDER (TOP) 5" BORE 8" STROKE	EA.	7
M101-872A	JAW CYLINDER (TOP) 4" BORE 8" STROKE	EA.	7
M100-016	BALL BEARING 1-1/2" DIA.	EA.	8
M100-014	HEATERBAR	EA.	9
E100-490	NICHROME RIBBON .010 X 60"	EA.	9
M102-217	TEFLON COVER 3" X 60"	EA.	9
E100-494	REED SWITCH (JAW CYL.)	EA.	NA





Northern Equipment & Conveyor Co.

MAIN PUSH ASSEMBLY

<i>PART #</i>	<i>DESCRIPTION</i>	<i>QTY</i>	<i>ITEM</i>
F800-007	MAIN PUSH CROSS MEMBER	EA.	1
F800-008	MAIN PUSHER ARM	EA.	2
F800-009	MAIN PUSH PADDLE	EA.	3
F800-011	FLOATING MOUNT SPACER BLOCK	EA.	4
M100-637	MAIN PUSH CYLINDER 68" STROKE	EA.	5
M100-001	1" TWN BEARING	EA.	6
E102-291	REED SWITCH	EA.	7
M100-000	SHAFT SUPPORT 1" DIA.	EA.	8

